

APPLYING FOR ACCOMMODATION

VICTORIA & CANBERRA

4 SIMPLE STEPS

- Step 1** Work out what type of accommodation you would like to apply for.
- Step 2** Make a list of the options you are interested in and then request information from the accommodation sources.
- Step 3** Ring the Housing Service and speak to them directly about your options. Visit the accommodation if you can.
- Step 4** Check with the individual accommodation sources to find out application processes and dates - these will vary between institutions.

TYPES OF ACCOMMODATION

On campus

This option includes colleges, halls, villages, studio apartments etc. The accommodation can be owned and operated by the university or through a private company.

Students usually have access to resources such as computer/Internet, library, gym, sports facilities, tutors etc.

Residences are usually very close to the institute or on the campus and can be fully catered, self-catered or a combination of both.

You may have to pay an application fee, which is often non-refundable if you don't secure a place.

You usually pay for a 42 - 52 week contract.

Application dates for accommodation vary. Some open from early August and others require you to wait until you have received an offer for a place in your course.

You need to apply once applications open and you may need references or a recommendation from your school.

Private rent/board

Private rentals can be difficult to find and expensive in large cities. Often students will go into shared accommodation to reduce costs.

Students will be signed to a lease of 52 weeks compared to 40 - 42 weeks for university and there will be start up and ongoing costs including utilities.

If you are lucky enough to have friends, family or relatives living in the area you will be studying, you may be able to board with them.

Commercial accommodation

These accommodation institutions are generally independent from universities and TAFE Institutes. Prices and access to resources can vary.

They often have communal self-catering kitchens. Prices vary.



ACCOMMODATION - VICTORIA

Rates are approximate, based on a full year, and may rise for the 2024 intake.

VICTORIA UNIVERSITY

- Website and links to online application portals - <https://bit.ly/2BHyEpk>
- Option 1: UniLodge@VU: between \$245 - 309 p/w.
- Option 2: Housing Database, shared housing, <https://vu.studystays.com.au/>

MONASH UNIVERSITY

- Website and links to online application portal - www.monash.edu/accommodation
- Accommodation available at the Clayton and Peninsula campuses.
- Prices start at \$264.25 p/w. Applications open 1 September.
- Mannix College - \$24,395 (2023 rate, 39 weeks), <https://mannix.monash.edu/>
- Off campus options - <https://bit.ly/2BUI2rL>

AUSTRALIAN CATHOLIC UNIVERSITY

- Melbourne: examples include - Iglu (\$349 - \$589 p/w), St Mary's College, University of Melbourne (2023 - \$28,550 p/y), Marist House Fitzroy (\$280 p/w), UniLodge Melbourne Central (375 p/w), <https://bit.ly/339lxMF>
- Ballarat: Two options - Managed Student Residences and Camillus Residence, \$178 - \$210 p/w, <https://bit.ly/2T686s2>

FEDERATION UNIVERSITY

- Website and links to online application portal - <https://bit.ly/3CV3c7J>
- Cost p/w: Ballarat: \$224 - \$301, Gippsland: \$189 - \$224, Berwick: \$245 - \$266

DEAKIN UNIVERSITY

- Website and links to online application portal - <http://bit.ly/1ewrPLa>
- Cost p/w: Melbourne: \$264 - \$345, Geelong (Waurm Ponds) - \$239 - \$279, Geelong (Waterfront): \$259 - \$276, Warrnambool: \$212 - \$215.
- Deakin Houseme: off campus share housing - <https://bit.ly/2GxufeE>

SWINBURNE UNIVERSITY

- Website and links to online application portal - <http://bit.ly/1hrZx7f>
- Cost p/w: College: \$310, single studio - \$358 - \$399, apartments: \$276 - \$314
- UniLodge Vivida- privately owned student accommodation located next to the Hawthorn campus. 12-month lease, <http://bit.ly/1NAN8tM>

RMIT UNIVERSITY

- Accommodation website - <https://bit.ly/3QfClSm>
- Bundoora campus - Walert House. \$240 - \$344 p/w (2022 rates).
- City and Brunswick campuses - purpose built student residences and hostels.
- Scholarships available.



ACCOMMODATION - VICTORIA

THE UNIVERSITY OF MELBOURNE

LA TROBE UNIVERSITY

Rates are approximate, based on a full year, and may rise for the 2023 intake.

- Accommodation website and options, <https://bit.ly/3yUTD6t>
- Cost p/w: Little Hall: \$385 - \$589, Lisa Belleair House: \$369 - \$510, UniLodge Lincoln House: \$299 - \$424. Student Village Melbourne - approximately \$400+
- Residential Colleges. 10 options. \$25,043 - \$36,825 p/y
- Off-campus options - <https://bit.ly/2lfYGsl>

- Accommodation website and options - <http://bit.ly/1KDNDnk>
- Melbourne: Colleges and apartments. \$290 - \$395 p/w.
- Bendigo: \$215 - \$270 p/w.
- Albury-Wodonga, Ballarat, Melton, Mildura, Shepparton: \$230 p/w
- Off campus options: <https://bit.ly/2MnR05R>

ACCOMMODATION - CANBERRA

AUSTRALIA NATIONAL UNIVERSITY

UNIVERSITY OF CANBERRA

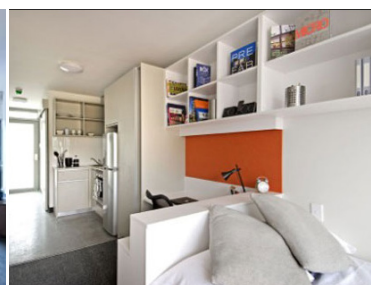
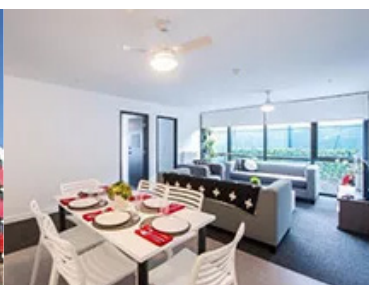
AUSTRALIAN CATHOLIC UNIVERSITY

Rates are approximate, based on a full year, and may rise for the 2024 intake.

- Website and links to online application portal - <https://bit.ly/2mkPok5>
- Colleges, Halls and Lodges. Catered and non-catered options, \$260 - \$520 p/w.

- Website and links to online application portal - <http://bit.ly/2bCZUdo>
- Cooper Lodge, Weeden Lodge, UC Lodge. Prices - \$162.50 - \$429 p/w. Campus West: \$179.50 - \$396.50.

- Website and links to online application portal - <https://bit.ly/2W3EsJp>
- Blackfriars Residences: \$290 - \$310 p/w.



MELBOURNE BASED ACCOMMODATION

UniLodge

Multiple locations across Melbourne area. Some residences have meals. Cost varies depending on unit type and location.

www.unilodge.com.au

Home @ Real Estate Agents

Flinders Street, Melbourne. Studio Apartment. \$330+ p/w. 52 week lease.

www.homeat.com.au/

Kew Student Residence

25 Mary Street, Kew. On site student support and resident managers. Price includes three meals per day and partially furnished room. Accommodation is twin share with shared bathroom.

www.kewstudentresidence.com.au

Together co-living Melbourne

\$350+ p/w (includes utilities). Studio rooms located at 'Bell City' Preston.

<https://bit.ly/3AUfNq9>

Birch Ridge Student Residences

6 student residences across Melbourne. \$275 - \$690 p/w.

<https://birchridge.com.au/>

Brunswick Uniting Church Student Housing

Shared housing. For people of various faiths/beliefs. No catering but shared kitchen available. Rent is paid per month plus expenses.

<http://bit.ly/2uYbEk7>

Student Housing Australia

This is a student housing database.

- Go to <http://sha.com.au/>
- Select the TAFE/University you would like to attend.
- All student housing near the institution will appear including private rentals and student apartments.

Iglu Student Accommodation

Located at four Melbourne locations. \$479 - \$629 p/w. 1 - 6 bedroom apartments. Self catered, gym, BBQ, student lounge etc. Scholarships available.

<https://iglu.com.au/>

Carlton Student Accommodation

Three locations- Gratton, Cardigan and Drummond Streets. \$245 - \$290 p/w. Furnished rooms. Self catered, free to apply, 22+, 44+, and 52+ week contracts.

<http://bit.ly/1m6Hfug>

Carlton Melbourne Colleges

Swanston Street, Carlton. Single rooms, twin share and rooms with bathrooms. \$209 - \$392 p/w. Self catered.

<https://cmcliving.com.au/>

Yugo

Located in Melbourne and Carlton. University Square and Infinity Place Fully furnished and rent is inclusive of utilities.

<https://yugo.com/>

Brunswick St College

Apartments are located at Fitzroy, North Fitzroy and Collingwood. Students will share in a 3, 4, or 5 bedroom home. Cost includes 5 dinners per week. Rent is inclusive of utilities.

www.brunswickstcollege.com.au

Scape

11 properties across Melbourne. From \$329 per week. Lincoln College includes meals.

www.scape.com.au